

# CASTRIX

## DETASSELING MACHINES



# CASTRIX

## DETASSELING MACHINES



## THE COMPANY



The company Zoni Carlo e figli s.n.c. was founded at the beginning of the seventies when Zoni Carlo, knowing the problems concerning the cultivation and the emasculatation of seed corn, decided to realize a machine able to mechanize the plucking operation of the corn tops in order to permit the correct reproduction of these precious seeds.

In those years in fact, the emasculatation of the seed corn was carried out manually and the operators had to work on foot or eventually using some tractors.

This operation, particularly delicate, required several workers and skilled labor during the very short period, in

which the emasculatation work must be done.

It was therefore plain that the need of a functional mechanization of this work was particularly necessary for organizational and economic reasons.

The attempts done until then were always not successful: several were in fact the equipments and the systems developed, but none of those was able to carry out the plucking operation in the correct way.

On the contrary the machine planned by Zoni Carlo was able to solve the problem of the plucking of the corn tops in a fully rational and efficient way, reaching the wished organizational and economic advantages.

This result was possible thanks to the idea of realizing a machine equipped with one or more extirpation group/s composed of a couple of cylindrical rollers placed side by side, with at their tops some conical parts rolling in different ways in order to exercise a traction upwards which determines the plucking of the plants tops.

During the last years our machines have been continuously improved and our production currently includes, apart from detasseling machines for seed corn, also machines for the treatments of the cultivation and machines for tobacco, all realized using the most modern techniques in order to make them always more efficient.



## **MACHINE APPLICATION**

The self-propelled corn detasseler machine, also simply called "corn detasseler", is designed and constructed for detasseling the seed corn by cutting or tearing it. It gives the possibility to work on 8, 6, 4, 3 or 2 corn lines at a time, in a completely independent way both as regards its operativeness and its movements (the number of row depends from the machine' model).

Because of its construction typology the machine lends itself also to other kinds of processes, on certain agricultural cultivations, such as operations related to different treatments with liquids. The machine can be used on any agricultural area as long as the soil is sufficiently hard, levelled and with gradients being inferior to 6%.

The main function of this machine is cutting (or tearing) automatically the corn seed tassels using cutting or tearing devices placed on an adequate toolbar, in the front part of the machine. The toolbar raises and lowers doing vertical movements, reaching in this way the best position with regard to the plants to work on.

Moreover the vehicle can also be equipped with suitable baskets interconnected by a toolbar, placed at the rear of the machine, to transport the workers, which allows to catch manually the tassels missed by the vehicle. The machine is only for professional use. The operator who drives agricultural machines must be a trained person. The operative use of the detasseler machine normally requires one operator, except the possible employment of personnel for the manual detasseling operation.

## **MACHINE GENERAL DESCRIPTION**

The self-propelled corn detasseler machine, in its different typologies, it is labeled as self-propelled operating agricultural machine, that is suitable for agricultural operations.

Because of its particular construction it is suitable for a series of agricultural cultivations processes, especially such as detasseling using cutting blades or tearing rolls; treatments and chopping, particularly as regards to seed corn, in a completely independent way both as regards to its movements and its operativeness.

The machine, as far as its structure is concerned, is made up of a basic frame, that first differs in the number of wheels, that is, three or four. To the vertical appendixes of the structure, the "oleodynamic wheel engines" are joined, on which the wheels with tyres are assembled. An endothermic engine gives propulsion to the vehicle and allows to enable all the operative functions of the machine through a series of oleodynamic pumps, provided by the set up. The transmission is hydrostatic transmission, which allows to adjust the gears in a very precise and gradual way. The steering wheel is servoassisted and acts on the front wheel (or wheels). A series of baskets (two or four) to fit people, placed at the rear, allows to carry the staff for possible manual detasseling during the detasseling operations. The four-wheeled model can be equipped with a cabin.

The corn detasseler machine can be driven on a public road after undergoing a test ascertainment on behalf of the concerned Ministry of the Infrastructures and Transportations D.T.T. (Road Transports Department) through the office ex C.P.A. (Center for vehicles test).

## **CUSTOMIZATION**

The models listed below are presented in standard configurations.

We are able to customize the machine to suit your needs. Please contact us for more information.

All our models are **CE** certificated.

The machines has an identification plate filled with the following information:

- Model type
- Engine power (in KW)
- Chassis number
- Total mass
- Year of Building
- Approved for on-road driving (on customer request)



*Identification plate*



# CASTRIX S2

## DETASSELING MACHINES



### CASTRIX S2 TECHNICAL SHEET

MOTOR	DEUTZ D2011L03 turbo HP 43
TRACTION	HYDROSTATIC ON 3 DRIVING WHEELS
STEERING	HYDROSTATIC SYSTEM WITH HYDROGUIDE
TYRES DIMENSION	11.2.24 - PR
STARTER	ELECTRIC WITH BATTERY (12 V)
OIL TANK CAPACITY	130 LITRES
TOTAL WEIGHT FOR DETASSELING	KG. 1950
CUTTING BAR	2 OR 4 OR 6 ROWS
ROLLING BAR	2 OR 4 OR 6 ROWS
SPEED	0-20 KM/H

## **TECHNICAL DESCRIPTION**

### **MOTOR**

DEUTZ D2011 L04

### **DRIVE**

Completely hydrostatic on 3 driving wheels provided with hydraulic radial piston motors.

Rear motors Type S2: 600cc each

Rear motors Type S: 150cc + RID.RT.3

Front motors Type: 150cc.

The double drive which is got in this way allows travelling even on wet soil.

### **STEERING**

Hydrostatic steering system with hydrodrive

### **TEARING BAR**

Interchangable split equipment provided with 4/6 pairs of rollers placed 70 cm from each other (or 75-80) according to the seeding distance. It is supported with an hydraulic cylinder allowing to work from 1 m. minimum height up to 2.20 m. maximum height.

### **CUTTING BAR**

Interchangable split equipment provided with 4/6 knives placed 70 cm from each other (or 75-80) according to the seeding distance. It is supported by the same hydraulic cylinder as the tearing bar, Working heights are the same as for the previous bar.

### **PUMPS**

Front pump to operate motors, bars and Orbitrol, rear double pump for driving with variable capacity from 46cc/revolution, equipped with hydraulic booster for the automatic shutdown in the event of advance cable breakage.

### **FRAME STRUCTURE**

Square tubular sections dim 180x180 and 200x200 in double bridge steel with rudder.

### **OIL TANK**

It is built-in the frame. Capacity: about 130 l. hydraulic oil.

### **GAS OIL TANK**

Capacity about 50 lit.

### **SPEED**

0 to 24 km/h depending from the models.



Front view



General view



Side view



*CASTRIX S2 with treatments equipment (side view)*



*CASTRIX S2 (Operating equipment for treatments)*



*CASTRIX S2 with operating treatments equipment (rear view)*

# CASTRIX S2<sup>NEW</sup>

## DETASSELING MACHINES



### CASTRIX S2 TECHNICAL SHEET

MOTOR	DEUTZ D2011L03 HP 43
TRACTION	HYDROSTATIC ON 3 DRIVING WHEELS HYDROSTATIC SYSTEM WITH
STEERING	HYDROGUIDE
TYRES DIMENSION	11.2.24 - PR
STARTER	ELECTRIC WITH BATTERY (12 V)
OIL TANK CAPACITY	130 LITRES
TOTAL WEIGHT FOR DETASSELING	KG. 1950
CUTTING BAR	2 OR 4 OR 6 ROWS
ROLLING BAR	2 OR 4 OR 6 ROWS
SPEED	0-20 KM/H

## **TECHNICAL DESCRIPTION**

### **MOTOR**

DEUTZ D2011 L04

### **DRIVE**

Completely hydrostatic on 3 driving wheels provided with hydraulic radial piston motors.

Rear motors Type S2: 600cc each

Rear motors Type S: 150cc + RID.RT.3

Front motors Type: 150cc.

The double drive which is got in this way allows travelling even on wet soil.

### **STEERING**

Hydrostatic steering system with hydrodrive

### **CARRIER ELEMENTS' BAR**

Support bar for tearing or cutting elements with fixed spacers to work on predetermined seeding distance. The spacers can be placed from 70 cm to 80 cm from each other. It is supported with an hydraulic cylinder allowing to work from 90 cm. minimum height up to 220 cm. maximum height.

### **TEARING ELEMENTS**

Interchangeable split equipment provided with 4/6 pairs of wheels placed 70 cm from each other (or 75-80) according to the seeding distance.

### **CUTTING ELEMENTS**

Interchangeable split equipment provided with 4/6 knives placed 70 cm from each other (or 75-80) according to the seeding distance.

### **PUMPS**

Front pump to operate motors, bars and Orbitrol, rear double pump for driving with variable capacity from 46cc/revolution, equipped with hydraulic booster for the automatic shutdown in the event of advance cable breakage.

### **FRAME STRUCTURE**

Square tubular sections dim 180x180 and 200x200 in double bridge steel with rudder.

### **OIL TANK**

It is built-in the frame. Capacity: about 130 l. hydraulic oil.

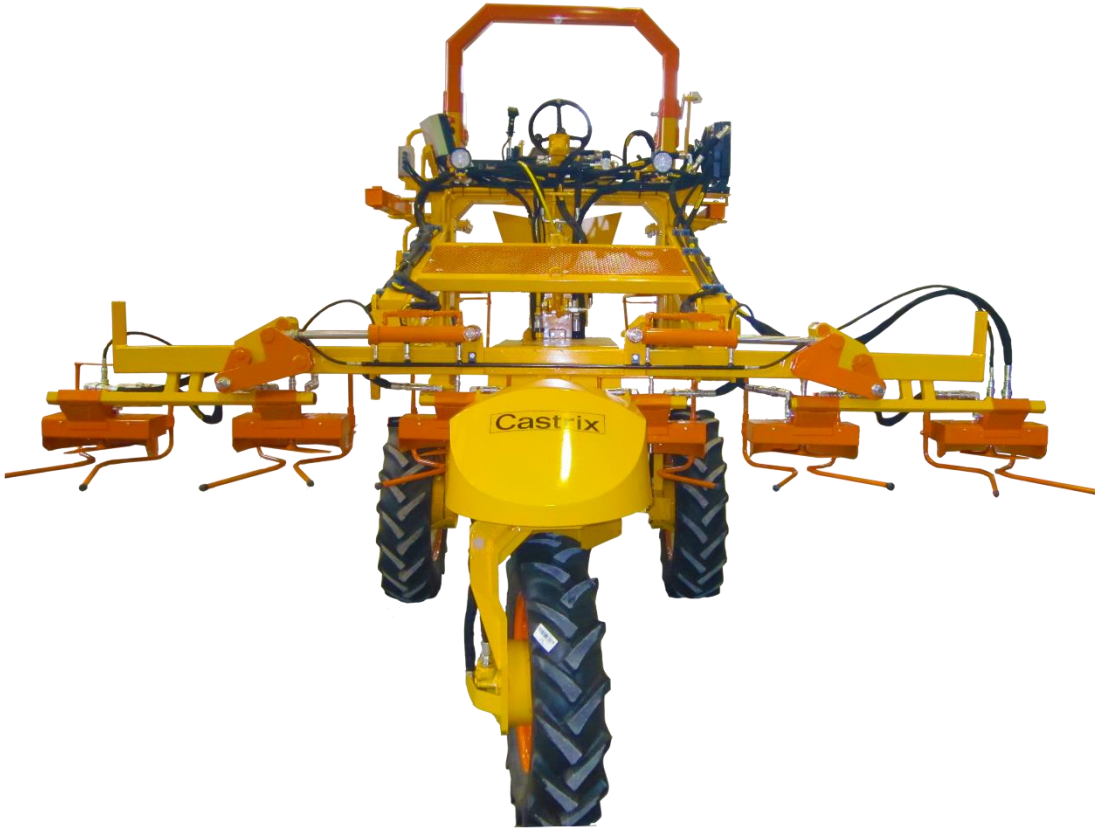
### **GAS OIL TANK**

Capacity about 50 l.

### **SPEED**

0 to 24 km/h depending from the models.





# CASTRIX S4

## DETASSELING MACHINES



### CASTRIX S4 TECHNICAL SHEET

MOTOR	DEUTZ MODEL TD2011L04 80 HP
TRACTION	HYDROSTATIC ON 4 DRIVING WHEEL WITH POCLAIN MOTORS
CARRIAGEWAY	VARIABLE WITH HYDRAULIC SYSTEM MINIMUM CM. 155 MAXIMUM CM. 225 CENTER WHEEL
STEERING	HYDROSTATIC SYSTEM WITH 2 STEERING WHEELS
CHASSIS	TUBULAR 200X200, 140X140
SUSPENSIONS	PNEUMATIC SYSTEM
TYRES DIMENSION	11.2.24
HEIGHT FREE FROM GROUND	CM. 170
STARTER	ELECTRIC WITH BATTERY (12 V)
OIL TANK CAPACITY	LITRES 140
FUEL TANK CAPACITY	LITRES 160
TOTAL WEIGHT FOR DETASSELING	KG. 2800
CUTTING BAR	6 OR 8 ROWS (3+3 OR 4+4)
ROLLING BAR	6 OR 8 ROWS (3+3 OR 4+4)
AUTOLEVEL SYSTEM	AUTOMATIC
SPEED	0-25 KM/H
ROOF	FIBERGLASS ROOF FOR SUN PROTECTION

## TECHNICAL DESCRIPTION

### MOTOR

DEUTZ TD2011L04

### DRIVE

Completely hydrostatic on 4 driving wheels provided with hydraulic radial piston motors.

Rear motor piston displacement type MSE05: 750cc each with twin lock.

Front motor piston displacement type MSE04: 375CC.

The double drive which is got in this way allows travelling even on wet soil.

### STEERING

Double cylinder hydrostatic system provided with hydrodrive.

### TEARING BAR

Equipment supplied with 4 interchangeable split pairs of rollers independent single adjustment. It is supported with an hydraulic cylinder allowing to work from 0.9 m minimum height up to 2.10 m maximum height.

### CUTTING BAR

Interchangeable equipment doubled supplied with 4 knives independent single adjustment. It is supported by the same hydraulic cylinder as the tearing bar. Working heights are the same as for the previous bar.

### PUMPS

Double front pump to operate motors, bars and Orbitrol, rear double pump for steering with variable capacity from 41+41 cc/revolution, provided with electric servo control.

### FRAME STRUCTURE

Square tubular sections dim. 200x200 and 200x100, in double bridge steel .

### OIL TANK

It is built-in in the frame. Capacity: about 120 l hydraulic oil.

### GAS OIL TANK

It is applied to the diesel motor having ca. 120 l capacity..

### SPEED

0 up to 25 km/h

### WHEELS

Measure 11.2-24



# CASTRIX S4C

## DETASSELING MACHINES



### CASTRIX S4C TECHNICAL SHEET

MOTOR	DEUTZ MODEL TD2011L04 80 HP
TRACTION	HYDROSTATIC ON 4 DRIVING WHEEL WITH POCLAIN MOTORS
CARRIAGEWAY	VARIABLE WITH HYDRAULIC SYSTEM MINIMUM CM. 200; MAXIMUM CM. 310
STEERING	HYDROSTATIC SYSTEM WITH 2 STEERING WHEELS
CHASSIS	TUBOLAR 200X200, 140X140
SUSPENSIONS	PNEUMATIC SYSTEM
TYRES DIMENSION	11.2.24
HEIGHT FREE FROM GROUND	CM. 170
STARTER	ELECTRIC WITH BATTERY (12 V)
OIL TANK CAPACITY	LITRES 140
FUEL TANK CAPACITY	LITRES 160
TOTAL WEIGHT FOR DETASSELING	KG. 3200
TOTAL WEIGHT WITH TREATMENT TANK FULL	KG. 4200
CUTTING BAR	6 OR 8 ROWS (3+3 OR 4+4)
ROLLING BAR	6 OR 8 ROWS (3+3 OR 4+4)
AUTOLEVEL SYSTEM	AUTOMATIC
SPEED	0-25 KM/H
ROOF	FIBERGLASS ROOF FOR SUN PROTECTION

## **TECHNICAL DESCRIPTION**

### **MOTOR**

DEUTZ TD2011L04

### **DRIVE**

Completely hydrostatic on 4 driving wheels provided with hydraulic radial piston motors.

Rear motor piston displacement type TR4: 750cc each with twin lock.

Front motor piston displacement type TR4: 375CC.

The double drive which is got in this way allows travelling even on wet soil.

### **STEERING**

Double cylinder hydrostatic system provided with hydrodrive.

### **TEARING BAR**

Equipment supplied with 4 interchangeable split pairs of rollers independent single adjustment. It is supported with an hydraulic cylinder allowing to work from 0.9 m minimum height up to 2.10 m maximum height.

### **CUTTING BAR**

Interchangeable equipment doubled supplied with 4 knives independent single adjustment. It is supported by the same hydraulic cylinder as the tearing bar. Working heights are the same as for the previous bar.

### **PUMPS**

Double front pump to operate motors, bars and Orbitrol, rear double pump for steering with variable capacity from 41+41 cc/revolution, provided with electric servo control.

### **FRAME STRUCTURE**

Square tubular sections dim. 200x200 and 200x100, in double bridge steel .

### **OIL TANK**

It is built-in in the frame. Capacity: about 120 l hydraulic oil.

### **GAS OIL TANK**

It is applied to the diesel motor having ca. 120 l capacity..

### **SPEED**

0 up to 25 km/h

### **WHEELS**

Measure 11-2-24



Side view with stainless steel tank



Rear view with spraying bar



Cabin: external view detail



# CASTRIX S5

## DETASSELING MACHINES



### CASTRIX S5 TECHNICAL SHEET

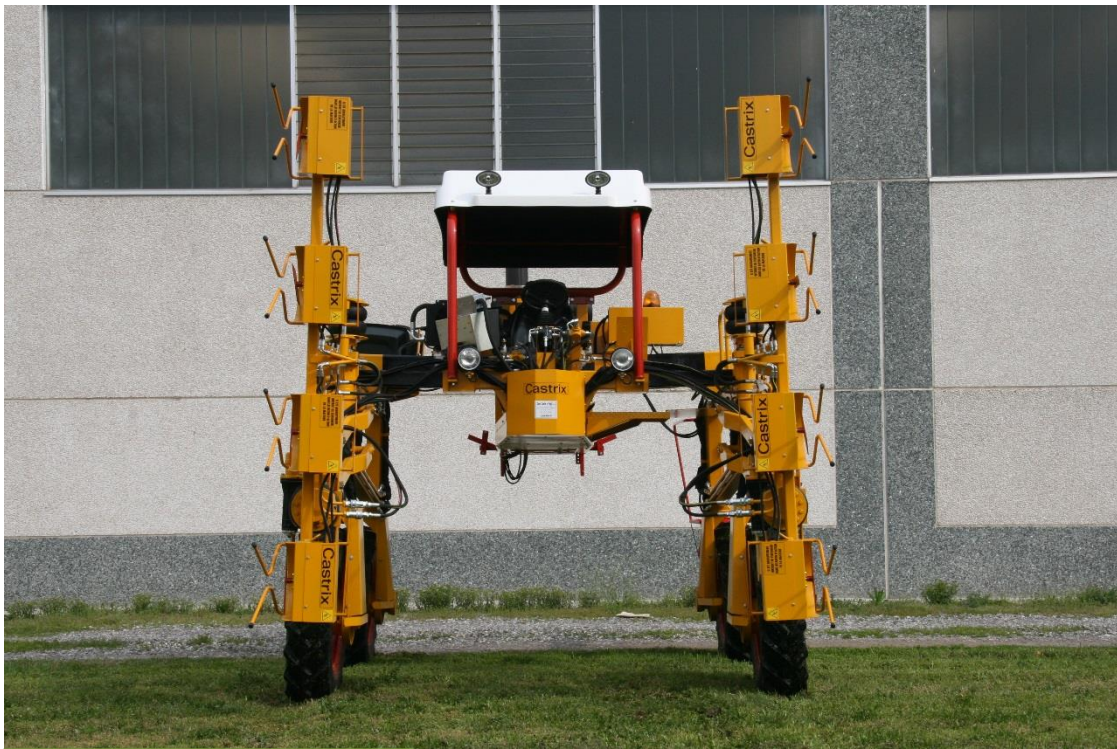
MOTOR	DEUTZ MODEL TD2011L04 80 HP
TRACTION	HYDROSTATIC ON 4 DRIVING WHEEL WITH POCLAIN MOTORS
CARRIAGEWAY	VARIABLE WITH HYDRAULIC SYSTEM MINIMUM CM. 200; MAXIMUM CM. 310
STEERING	HYDROSTATIC SYSTEM WITH 2 STEERING WHEELS
CHASSIS	TUBULAR 200X200, 140X140
SUSPENSIONS	PNEUMATIC SYSTEM
TYRES DIMENSION	11.2.24
HEIGHT FREE FROM GROUND	CM. 170
STARTER	ELECTRIC WITH BATTERY (12 V)
OIL TANK CAPACITY	140 LITRES
FUEL TANK CAPACITY	160 LITRES
TOTAL WEIGHT FOR DETASSELING	KG. 3350
CUTTING BAR	6 OR 8 ROWS (3+3 OR 4+4)
ROLLING BAR	6 OR 8 ROWS (3+3 OR 4+4)
AUTOLEVEL SYSTEM	AUTOMATIC
SPEED	0-25 KM/H
ROOF	FIBERGLASS ROOF FOR SUN PROTECTION

## **TECHNICAL DESCRIPTION**

<b><u>MOTOR</u></b>	DEUTZ TD2011L04
<b><u>DRIVE</u></b>	<p>Completely hydrostatic on 4 driving wheels provided with hydraulic radial piston motors.</p> <p>Rear motor piston displacement type MSE05: 750cc each with twin lock.</p> <p>Front motor piston displacement type MSE04: 375CC.</p> <p>The double drive which is got in this way allows travelling even on wet soil.</p>
<b><u>STEERING</u></b>	Double cylinder hydrostatic system provided with hydrodrive.
<b><u>TEARING BAR</u></b>	Equipment supplied with 4 interchangeable split pairs of rollers independent single adjustment. It is supported with an hydraulic cylinder allowing to work from 1 m minimum height up to 2.20 m maximum height.
<b><u>CUTTING BAR</u></b>	Interchangeable equipment doubled supplied with 4 knives independent single adjustment. It is supported by the same hydraulic cylinder as the tearing bar. Working heights are the same as for the previous bar.
<b><u>PUMPS</u></b>	Double front pump to operate motors, bars and Orbitrol, rear double pump for steering with variable capacity from 41+41 cc/revolution, provided with electric servo control.
<b><u>FRAME STRUCTURE</u></b>	Square tubular sections dim. 200x200 and 200x100, in double bridge steel .
<b><u>OIL TANK</u></b>	It is built-in in the frame. Capacity: about 120 l hydraulic oil.
<b><u>GAS OIL TANK</u></b>	It is applied to the diesel motor having ca. 120 l capacity..
<b><u>SPEED</u></b>	0 up to 25 km/h
<b><u>WHEELS</u></b>	Measure 11-2-24



CASTRIX S5 with carriageway all narrow



CASTRIX S5 with carriageway all wide



# CASTRIX S5 Matic

## DETASSELING MACHINES



### CASTRIX S5 TECHNICAL SHEET

MOTOR	DEUTZ MODEL TD2011L04 80 HP
TRACTION	HYDROSTATIC ON 4 DRIVING WHEEL WITH POCLAIN MOTORS
CARRIAGEWAY	VARIABLE WITH HYDRAULIC SYSTEM MINIMUM CM. 200; MAXIMUM CM. 310
STEERING	HYDROSTATIC SYSTEM WITH 2 STEERING WHEELS
CHASSIS	TUBULAR 200X200, 140X140
SUSPENSIONS	PNEUMATIC SYSTEM
TYRES DIMENSION	11.2.24
HEIGHT FREE FROM GROUND	CM. 170
STARTER	ELECTRIC WITH BATTERY (12 V)
OIL TANK CAPACITY	140 LITRES
FUEL TANK CAPACITY	160 LITRES
TOTAL WEIGHT FOR DETASSELING	KG. 3350
CUTTING ELEMENTS	6 OR 8 ROWS (2+2+2 OR 2+2+2+2)
TEARING ELEMENTS	6 OR 8 ROWS (2+2+2 OR 2+2+2+2)
AUTOLEVEL SYSTEM	AUTOMATIC
SPEED	0-25 KM/H
ROOF	FIBERGLASS ROOF FOR SUN PROTECTION

**MOTOR**

DEUTZ TD2011L04

**DRIVE**

Completely hydrostatic on 4 driving wheels provided with hydraulic radial piston motors.

Rear motor piston displacement type MSE05: 750cc each with twin lock.

Front motor piston displacement type MSE04: 375CC.

The double drive which is got in this way allows travelling even on wet soil.

**STEERING**

Double cylinder hydrostatic system provided with hydrodrive.

**TEARING BAR**

Wheels coupled 2+2 mounted on independent arms and photocell sensors.

**CUTTING BAR**

Knives coupled 2+2 mounted on independent arms and photocell sensors.

**PUMPS**

Double front pump to operate motors, bars and Orbitrol, rear double pump for steering with variable capacity from 41+41 cc/revolution, provided with electric servo control.

**FRAME STRUCTURE**

Square tubular sections dim. 200x200 and 200x100, in double bridge steel .

**OIL TANK**

It is built-in in the frame. Capacity: about 120 l hydraulic oil.

**GAS OIL TANK**

It is applied to the diesel motor having ca. 120 l capacity..

**SPEED**

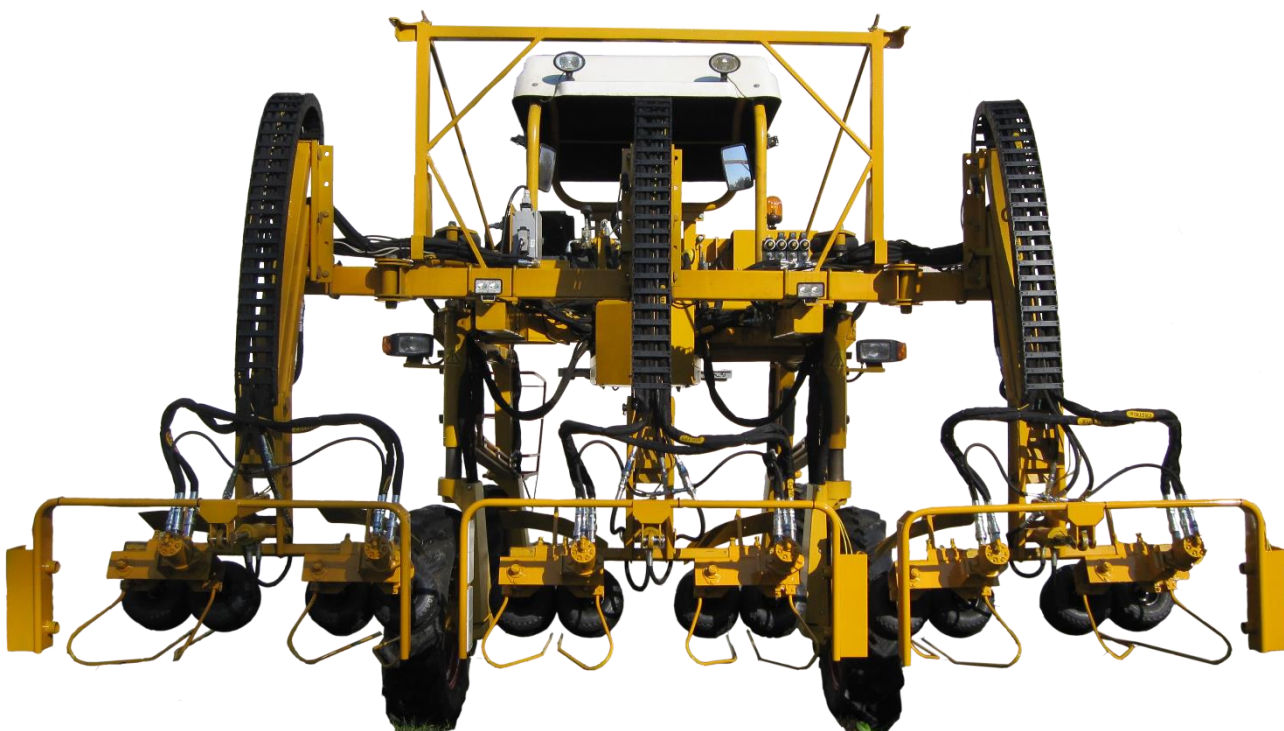
0 up to 25 km/h

**WHEELS**

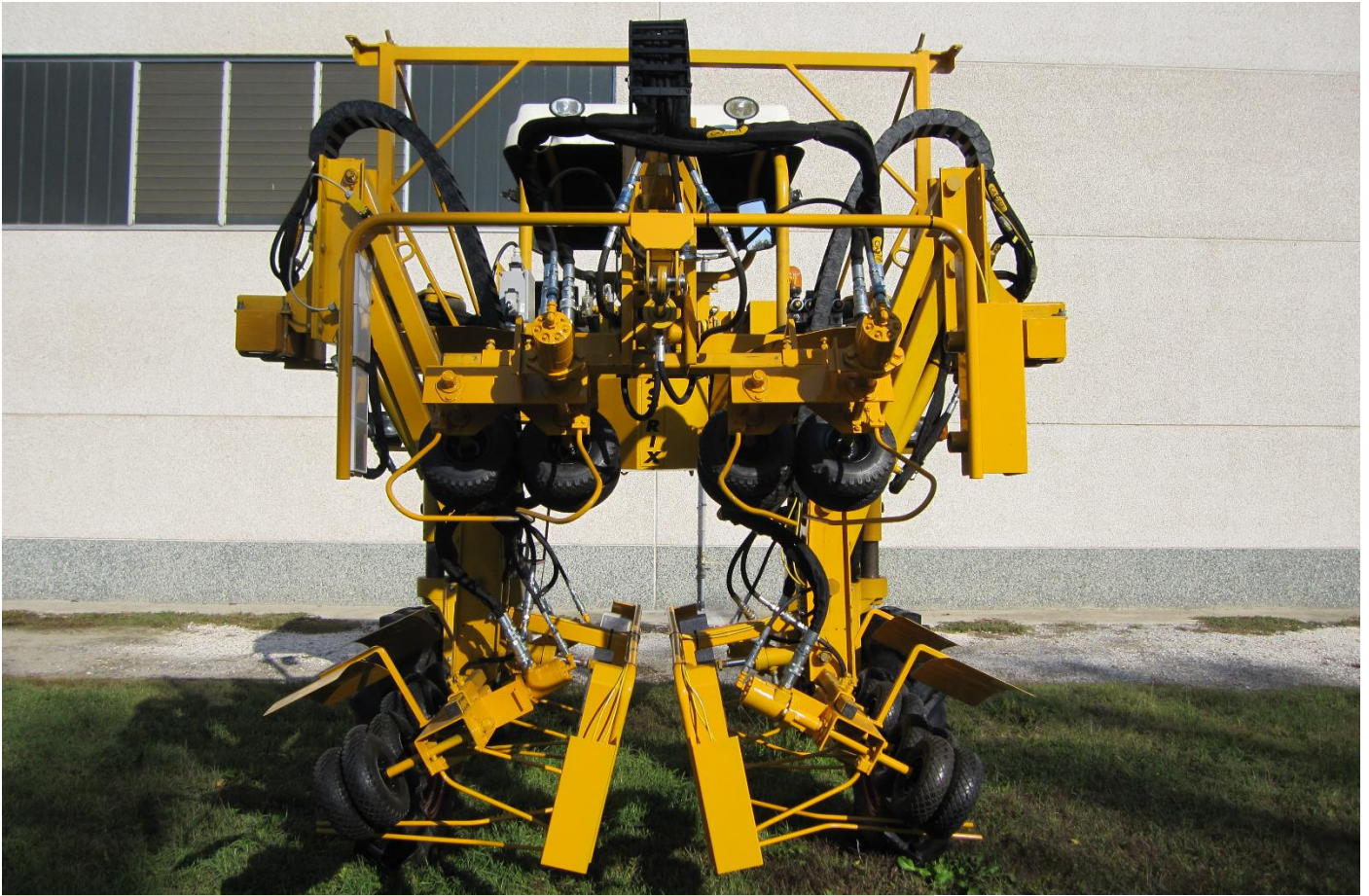
Measure 11-2-24



*CASTRIX S5 Matic with cutting equipment (knives set to work on 8 rows)*



*CASTRIX S5 Matic with tearing equipment (wheels set to work on 6 rows) ready for work*



*CASTRIX S5 Matic all narrow and with arms folded in transport position – tearing equipment*



*CASTRIX S5 Matic side view – work position – tearing equipment*



CASTRIX S5 Matic – tearing equipment



CASTRIX S5 Matic – work position with tearing equipment (rubber wheels)

# CASTRIX S8

## DETASSELING MACHINES



**CASTRIX S8 TECHNICAL SHEET**

MOTOR	DEUTZ MODEL TCD 3,6 120 HP
TRACTION	HYDROSTATIC ON 4 DRIVING WHEEL WITH POCLAIN MOTORS
CARRIAGEWAY	VARIABLE WITH HYDRAULIC SYSTEM MINIMUM CM. 195; MAXIMUM CM. 315
STEERING	HYDROSTATIC SYSTEM WITH 4 STEERING WHEELS
CHASSIS	LASER SHAPED IN VARIOUS DIMENSIONS
SUSPENSIONS	PNEUMATIC SYSTEM
TYRES DIMENSION	270/95R38
HEIGHT FREE FROM GROUND	CM. 170
STARTER	ELECTRIC WITH BATTERY (12 V)
OIL TANK CAPACITY	180 LITRES
FUEL TANK CAPACITY	160 LITRES
TOTAL WEIGHT FOR DETASSELING	KG. 4500
TOTAL WEIGHT WITH TREATMENT TANK FULL	KG. 6300
CUTTING BAR	6 OR 8 ROWS (3+3 OR 4+4)
ROLLING BAR	6 OR 8 ROWS (3+3 OR 4+4)
SPRAYING BAR	12 OR 15 METRES (FULL HYDRAULIC SYSTEM) WITH NOOZLES TREJET
WATER TANK CAPACITY	LITRES 1500
CABIN	WITH AIR CONDITIONED AND CARBON FILTER
AUTOLEVEL SYSTEM	AUTOMATIC
SPEED	0-25 KM/H

## TECHNICAL DESCRIPTION

<b><u>MOTOR</u></b>	DEUTZ TCD 3,6 120 HP
<b><u>DRIVE</u></b>	<p>Completely hydrostatic on 4 driving wheels provided with hydraulic radial piston motors.</p> <p>Rear motor piston displacement type MSE08: 750cc each with twin lock.</p> <p>Front motor piston displacement type MSE05: 750CC.</p> <p>The double drive which is got in this way allows travelling even on wet soil.</p>
<b><u>STEERING</u></b>	Double cylinder hydrostatic system provided with hydrodrive on 4 driving wheels.
<b><u>TEARING BAR</u></b>	Equipment supplied with 6/8 interchangeable split pairs of rollers independent single adjustment. It is supported with an hydraulic cylinder allowing to work from 1 m minimum height up to 2.20 m maximum height.
<b><u>CUTTING BAR</u></b>	Interchangeable equipment doubled supplied with 6/8 knives independent single adjustment. It is supported by the same hydraulic cylinder as the tearing bar. Working heights are the same as for the previous bar.
<b><u>PUMPS</u></b>	Double front pump to operate motors, bars and Orbitrol, rear double pump for steering with variable capacity from 41+41 cc/revolution, provided with electric servo control.
<b><u>FRAME STRUCTURE</u></b>	Laser shaped in various dimension
<b><u>OIL TANK</u></b>	It is built-in in the frame. Capacity: about 180 l hydraulic oil.
<b><u>GAS OIL TANK</u></b>	It is applied to the diesel motor having ca. 160 l capacity.
<b><u>SPEED</u></b>	0 up to 25 km/h
<b><u>WHEELS</u></b>	Measure 270-95 R 38



*CASTRIX S8 with carriageway all narrow*



*CASTRIX S8 with carriageway all wide*





# CASTRIX C4

## DETASSELING MACHINES



CASTRIX C4 TECHNICAL SHEET	
MOTOR	DEUTZ MODEL TCD 2,9 L4 HP 76
TRACTION	HYDROSTATIC ON 4 DRIVING WHEEL WITH POCLAIN MOTORS
CARRIAGEWAY	VARIABLE WITH HYDRAULIC SYSTEM MINIMUM CM. 195; MAXIMUM CM. 315
STEERING	HYDROSTATIC SYSTEM WITH 4 STEERING WHEELS
CHASSIS	STEEL TUBULAR SQUARE 200X200 DOUBLE BRIDGED
SUSPENSIONS	PNEUMATIC SYSTEM
TYRES DIMENSION	11.2-38
HEIGHT FREE FROM GROUND	CM. 170
STARTER	ELECTRIC WITH BATTERY (12 V)
OIL TANK CAPACITY	180 LITRES
FUEL TANK CAPACITY	160 LITRES
RAPESEED CROP DIVIDER	BAURAL
CABIN	ROPS HOMOLOGATED WITH AIR CONDITIONED AND CARBON FILTER
AUTOLEVEL SYSTEM	AUTOMATIC
SPEED	0-25 KM/H
COOLING SYSTEM	LIQUID COOLING

## TECHNICAL DESCRIPTION

<b><u>MOTOR</u></b>	DEUTZ TCD 2,9 L4 HP 76
<b><u>DRIVE</u></b>	<p>Completely hydrostatic on 4 driving wheels provided with hydraulic radial piston motors.</p> <p>Rear motor piston displacement type MSE05 with twin lock.</p> <p>Front motor piston displacement type MSE04.</p> <p>The double drive which is got in this way allows travelling even on wet soil.</p>
<b><u>COOLING SYSTEM</u></b>	Liquid cooling
<b><u>STEERING</u></b>	Double cylinder hydrostatic system provided with hydrodrive on 4 driving wheels.
<b><u>PUMPS</u></b>	Double front pump to operate motors, bars and Orbitrol, rear double pump for steering with variable capacity from 41+41 cc/revolution, provided with electric servo control.
<b><u>FRAME STRUCTURE</u></b>	Steel tubular square 200x200 and 200x100 double bridged
<b><u>RAPSEED CROP DIVIDER</u></b>	Baural
<b><u>OIL TANK</u></b>	It is built-in in the frame. Capacity: about 180 l hydraulic oil.
<b><u>GAS OIL TANK</u></b>	It is applied to the diesel motor having ca. 160 l capacity.
<b><u>SPEED</u></b>	0 up to 25 km/h.
<b><u>WHEELS</u></b>	Measure 11.2-38
<b><u>CABIN</u></b>	ROPS homologated with air conditioned and carbon filters.



## ACCESSORIES AND SPARE PARTS



*Roller (detail)*



*Knife (detail)*



*Rubber wheel for tearing element*



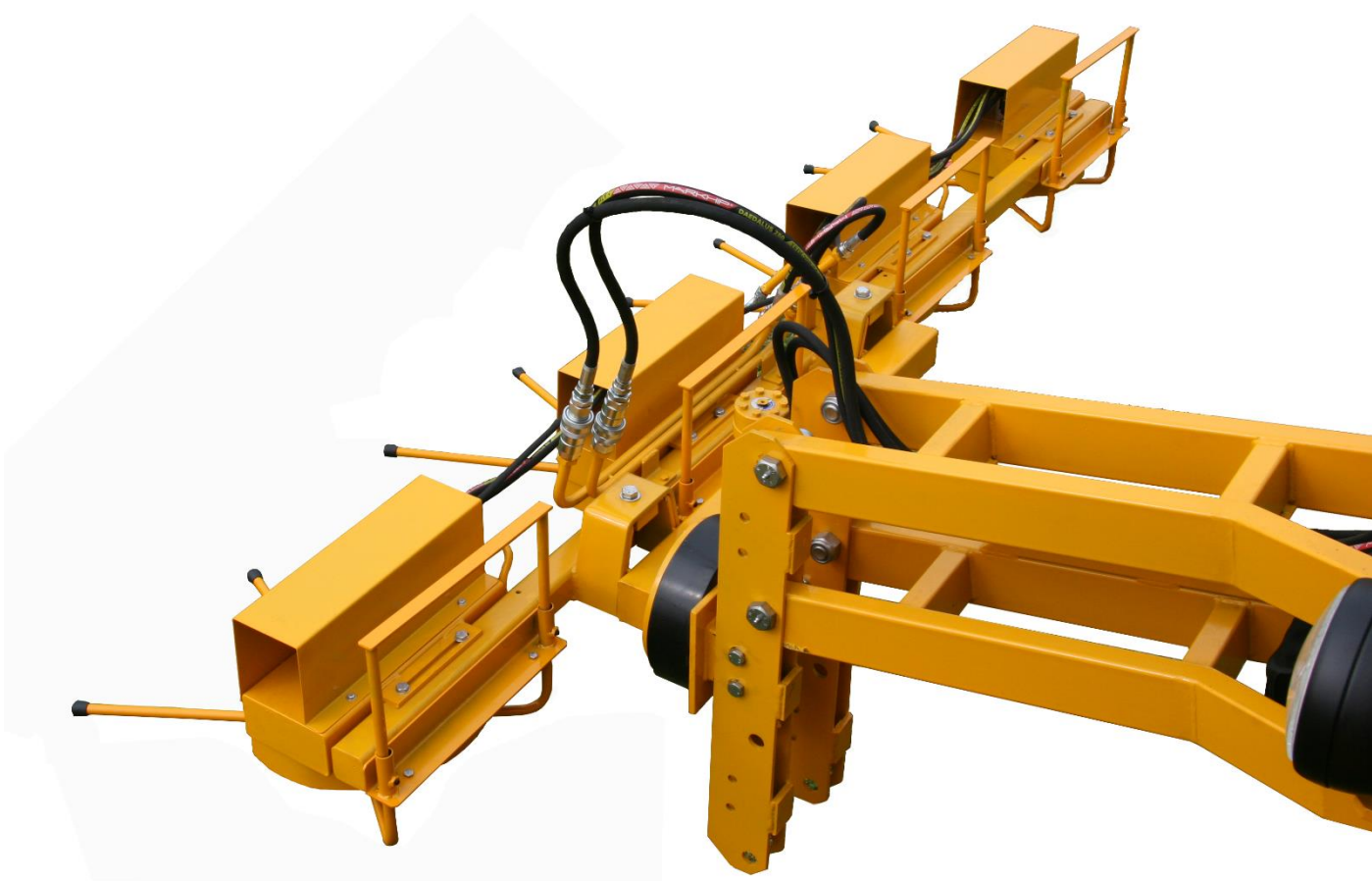
*Rolling bar with fixed elements (depending on the model it can be on 4, 6 or 8 rows)*



*Cutting bar with fixed elements (depending on the model it can be on 4, 6 or 8 rows)*



*Rolling bar with independent and adjustable elements*



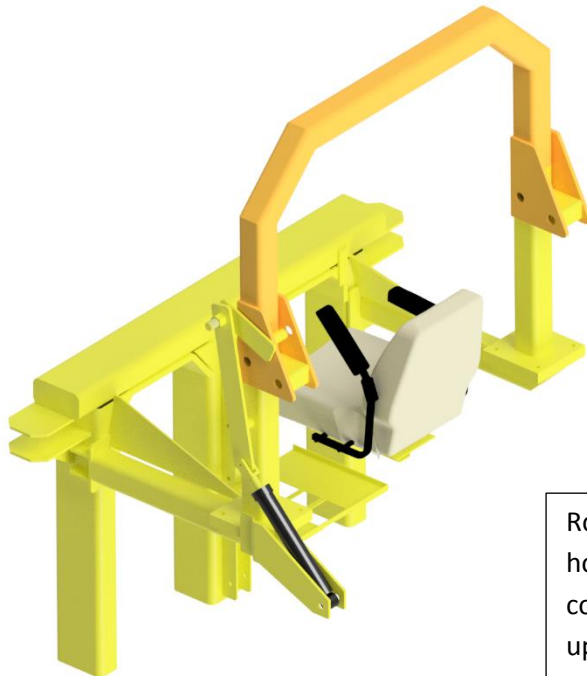
*Cutting bar with independent and adjustable elements*



Cut element for CASTRXI S2 New and CASTRIX S5 Matic

Tear element for CASTRXI S2 New and CASTRIX S5 Matic

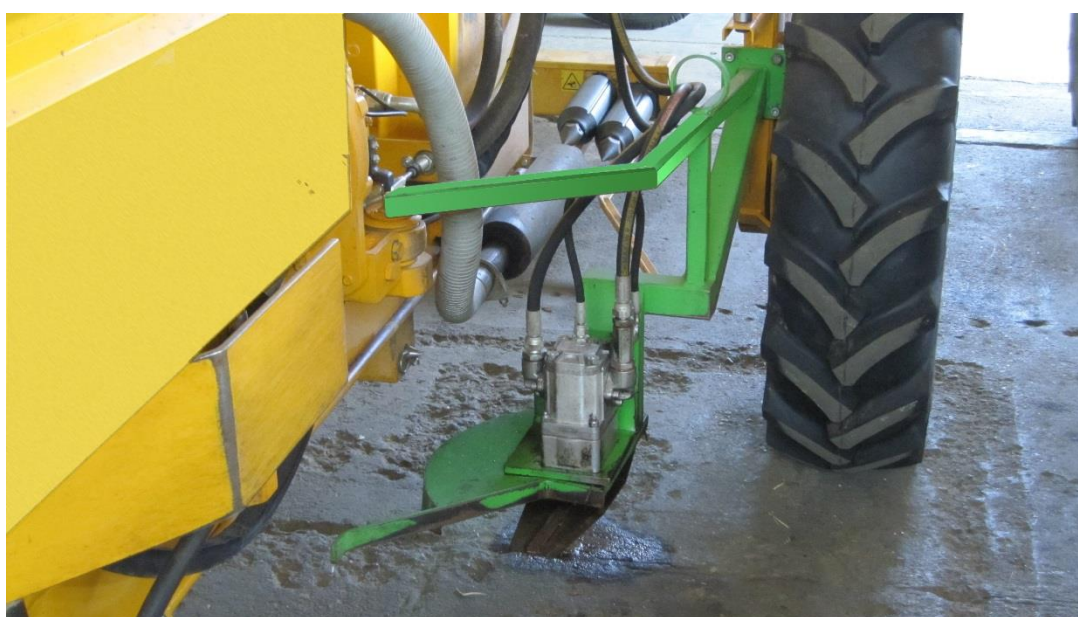




Roll bar for operator safety,  
homologation n. 5553, OECD Code 8,  
complete with hydraulic cylinder for lift  
up/down movement (available only for  
CASTRIX S2 and CASTRIX S2 New).



*Male row destroyer: mounted on the wheel it allows a quick pass in the field and ensure the complete destruction of the row male*



*Male cutting*



*Spraying bar 12 or 15 metres (with full hydraulic system) provided with Tri-Jet noozles*



*Stainless steel tanks for treatments products from 1000 to 1500 litres capacity (depending on model and configuration)*



**DETASSELING MACHINES**

**ZONI CARLO & FIGLI s.n.c**  
**Costruzione Macchine Agricole**  
**Viale Europa, 30**  
**26020 – Acquanegra Cremonese (CR)**  
**Italy**

**Phone: +39 0372 70001**  
**Fax: +39 0372 79552**  
**E-mail: [lanfzoni@tin.it](mailto:lanfzoni@tin.it)**  
**Website: [www.castrix.it](http://www.castrix.it)**

# OUR MACHINES ARE AT WORK IN THE FOLLOWING COUNTRIES

(alphabetical order):

				
<u>AUSTRIA</u>	<u>CHILE</u>	<u>CROATIA</u>	<u>ČESKÁ REPUBLIKA</u>	<u>EGYPT</u>
				
<u>FRANCE</u>	<u>GERMANY</u>	<u>GREECE</u>	<u>HUNGARY</u>	<u>ITALY</u>
				
<u>MEXICO</u>	<u>ROMANIA</u>	<u>RUSSIAN FEDERATION</u>	<u>SERBIA</u>	<u>SLOVENJIE</u>
				
<u>SLOVENSKO</u>	<u>SPAIN</u>	<u>TURKEY</u>	<u>UKRAINE</u>	<u>URUGUAY</u>
				
		<u>ZAMBIA</u>		

**CASTRIX is :**

TECHNOLOGY

RESEARCH AND DEVELOPMENT

DESIGN

BEST VALUE AND AFFORDABILITY

EASE OF USE

LONG-LASTING LIFE